

# THE LEAK DETECTOR CHALLENGE!

FOR FAMILIES WITHIN  
THE CITY OF WINNIPEG

## Did You Know?

The average Winnipegger uses 170 L/day of water — and 6% of this water is lost to toilet leaks. Save water and money by finding and fixing plumbing leaks!

Participating families will be entered to win a one-year FortWhyte Family Membership.

## How to Participate:

The Leak Detector Challenge takes place during March, to coincide with Fix a Leak Week, March 20-26.

*It's easy.* Check all fixtures, especially toilets in your home for leaks and use your water meter to check for any additional leaks.

Complete the Leak Detector Challenge form online or on the back of this poster. Submit your entry before March 31 to be eligible for prizes!

Contact  
FortWhyte Alive's  
**Slow the Flow  
Coordinator**

by email or phone at  
[slowtheflow@fortwhyte.org](mailto:slowtheflow@fortwhyte.org)  
or at (204) 989-8355 x 203  
[fortwhyte.org/slowtheflow](http://fortwhyte.org/slowtheflow)



Water and Waste Department



**FortWhyte Alive**  
HUMAN. NATURE.

# THE FAMILY LEAK DETECTOR CHALLENGE!

Plumbing leaks can waste water 24 hours a day, 7 days a week and could cost you hundreds of dollars each year!

The Leak Detector Challenge takes place during March, to coincide with *WaterSense's Fix a Leak Week*, March 20-26, and World Water Day, March 22.

## The water meter is your leak detector

From City of Winnipeg Water and Waste Department's Get a handle on Leaks Brochure

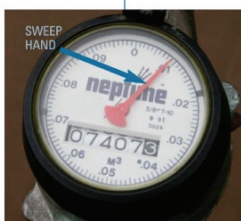
Read the water meter regularly and follow these steps to see if there is a leak in your home.

- 1 Turn off all water-using appliances (e.g., washing machine, dishwasher, sprinkler).
- 2 Find your water meter – usually located in the basement or crawlspace.
- 3 Open the lid on the water meter. Every meter will have a sweep hand, and some have a low flow indicator.



Low flow indicator model

You have a leak somewhere in your home if the low flow indicator is moving when you aren't using any water.



Sweep hand model

- Mark the position of the sweep hand.
- Don't use any water for 30 minutes.
- If the sweep hand has moved after the 30 minutes, you have a leak somewhere in your home.

## LEAK DETECTION: HOW TO

### Toilets:

Listen and look for running water. Complete the silent leak test by adding some food coloring or a dye tablet to the toilet tank, wait 15 minutes. If the water in bowl has changed color you have a leak.

### Measuring Faucet or Shower Drip Flow Rate:

You will need a measuring cup, and set of measuring spoons of known volume (millilitres – mL) and a timer. Catch all drips into the cup for 1 minute. After time is up, write down the collected volume. You may need to transfer water to a measuring spoon to get an accurate measurement.

## FIXING LEAKS

The most common cause for a leaking toilet is a worn out flapper valve. This is an easy and inexpensive fix. If you have any difficulty changing your flapper, we suggest you contact a licensed plumber.

Try using a wrench to tighten a dripping faucet. Other causes of the leak could be damage to the faucet, including worn washers and seals. Replace faucets and showerheads with WaterSense labelled models. Visit [www3.epa.gov/watersense](http://www3.epa.gov/watersense).

**Questions? Contact FortWhyte Alive at [slowtheflow@fortwhyte.org](mailto:slowtheflow@fortwhyte.org) or (204) 989-8355**

## LEAKS DETECTED

### Toilets

| Location | Number of leaking toilets | Math time                       | Leak amount (Litres per day) |
|----------|---------------------------|---------------------------------|------------------------------|
|          |                           | Number of toilets x 135 L/day = | TOTAL:                       |

### Faucets & Showers

| Location | What is the drip flow rate (mL per minute)?<br>(Drip Flow Rate x 1440)<br>divide by 1000 | Leak amount (Litres per day) |
|----------|--|------------------------------|
|          |  |                              |
|          |  |                              |
|          |  |                              |
|          |  |                              |
|          |  | TOTAL:                       |

Overall Audited Leak Volume (Litres per Day): \_\_\_\_\_

| Did your water meter test detect a leak?<br>Yes / No | Volume of leak | Volume of Leak x 48 | Leak amount (volume per day) |
|--|----------------|---------------------|------------------------------|
|  |                |                     | TOTAL:                       |

Name: \_\_\_\_\_

Address: \_\_\_\_\_

City: \_\_\_\_\_ Prou.: \_\_\_\_\_

Postal Code: \_\_\_\_\_

Email: \_\_\_\_\_

☐ Please email me details on upcoming programs and events.

**Complete this form online!**

Visit us at [fortwhyte.org/slowtheflow](http://fortwhyte.org/slowtheflow)

Forms can also be submitted by mail to the address below, or by email to [slowtheflow@fortwhyte.org](mailto:slowtheflow@fortwhyte.org).

FortWhyte Alive attn: Slow the Flow Coordinator  
1961 McCreary Rd, Winnipeg MB, R3P 2K9