

# THE LEAK DETECTOR CHALLENGE!



**CHECK** for leaks in toilets, taps, and showers, **FIX** those leaks to save water and money, **SHARE** your results with us, and **WIN!**

Every family that enters will receive a FREE shower timer, and be entered to win a FortWhyte Family Membership!

Use the Leak Detector Challenge Form available at [fortwhyte.org/slowtheflow](http://fortwhyte.org/slowtheflow), or pick up a paper copy while visiting us.

**Entry Deadline: March 31**

*Entries must be received before midnight.  
Open to Winnipeg residents only.*



# THE FAMILY LEAK DETECTOR CHALLENGE!

Plumbing leaks can waste water 24 hours a day, 7 days a week and could cost you hundreds of dollars each year!

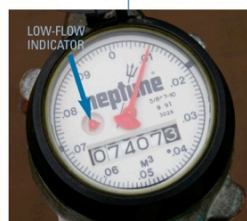
The Leak Detector Challenge is held in October and March, to coincide with *October Sustainability Month* and *WaterSense's Fix a Leak Week* in March.

## The water meter is your leak detector

From City of Winnipeg Water and Waste Department's Get a handle on Leaks Brochure

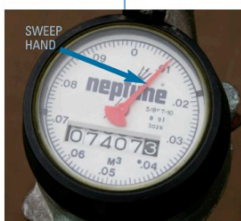
Read the water meter regularly and follow these steps to see if there is a leak in your home.

- 1 Turn off all water-using appliances (e.g., washing machine, dishwasher, sprinkler).
- 2 Find your water meter – usually located in the basement or crawlspace.
- 3 Open the lid on the water meter. Every meter will have a sweep hand, and some have a low flow indicator.



Low flow indicator model

You have a leak somewhere in your home if the low flow indicator is moving when you aren't using any water.



Sweep hand model

- Mark the position of the sweep hand.
- Don't use any water for 30 minutes.
- If the sweep hand has moved after the 30 minutes, you have a leak somewhere in your home.

## LEAK DETECTION: HOW TO

### Toilets:

Listen and look for running water. Complete the silent leak test by adding some food coloring or a dye tablet to the toilet tank, wait 15 minutes. If the water in bowl has changed color you have a leak.

### Measuring Faucet or Shower Drip Flow Rate:

You will need a measuring cup, and set of measuring spoons of known volume (millilitres – mL) and a timer. Catch all drips into the cup for 1 minute. After time is up, write down the collected volume. You may need to transfer water to a measuring spoon to get an accurate measurement.

## FIXING LEAKS

The most common cause for a leaking toilet is a worn out flapper valve. This is an easy and inexpensive fix. If you have any difficulty changing your flapper, we suggest you contact a licensed plumber.

Try using a wrench to tighten a dripping faucet. Other causes of the leak could be damage to the faucet, including worn washers and seals. Replace faucets and showerheads with WaterSense labelled models. Visit [www3.epa.gov/watersense](http://www3.epa.gov/watersense).

**Questions? Contact FortWhyte Alive at [slowtheflow@fortwhyte.org](mailto:slowtheflow@fortwhyte.org) or (204) 989-8355**

## LEAKS DETECTED

### Toilets

Location	Number of leaking toilets	Math time	Leak amount (Litres per day)
		Number of toilets x 135 L/day =	TOTAL:

### Faucets & Showers

Location	What is the drip flow rate (mL per minute)? (Drip Flow Rate x 1440) divide by 1000	Leak amount (Litres per day)
		TOTAL:

Overall Audited Leak Volume (Litres per Day): \_\_\_\_\_

Did your water meter test detect a leak? Yes / No	Volume of leak	Volume of Leak x 48	Leak amount (volume per day)
			TOTAL:

Name: \_\_\_\_\_

Address: \_\_\_\_\_

City: \_\_\_\_\_ Prou.: \_\_\_\_\_

Postal Code: \_\_\_\_\_

Email: \_\_\_\_\_

☐ Please email me details on upcoming programs and events.

**Complete this form online!**

Visit us at [fortwhyte.org/slowtheflow](http://fortwhyte.org/slowtheflow)

Forms can also be submitted by mail to the address below, or by email to [slowtheflow@fortwhyte.org](mailto:slowtheflow@fortwhyte.org).

FortWhyte Alive attn: Slow the Flow Coordinator  
1961 McCreary Rd, Winnipeg MB, R3P 2K9